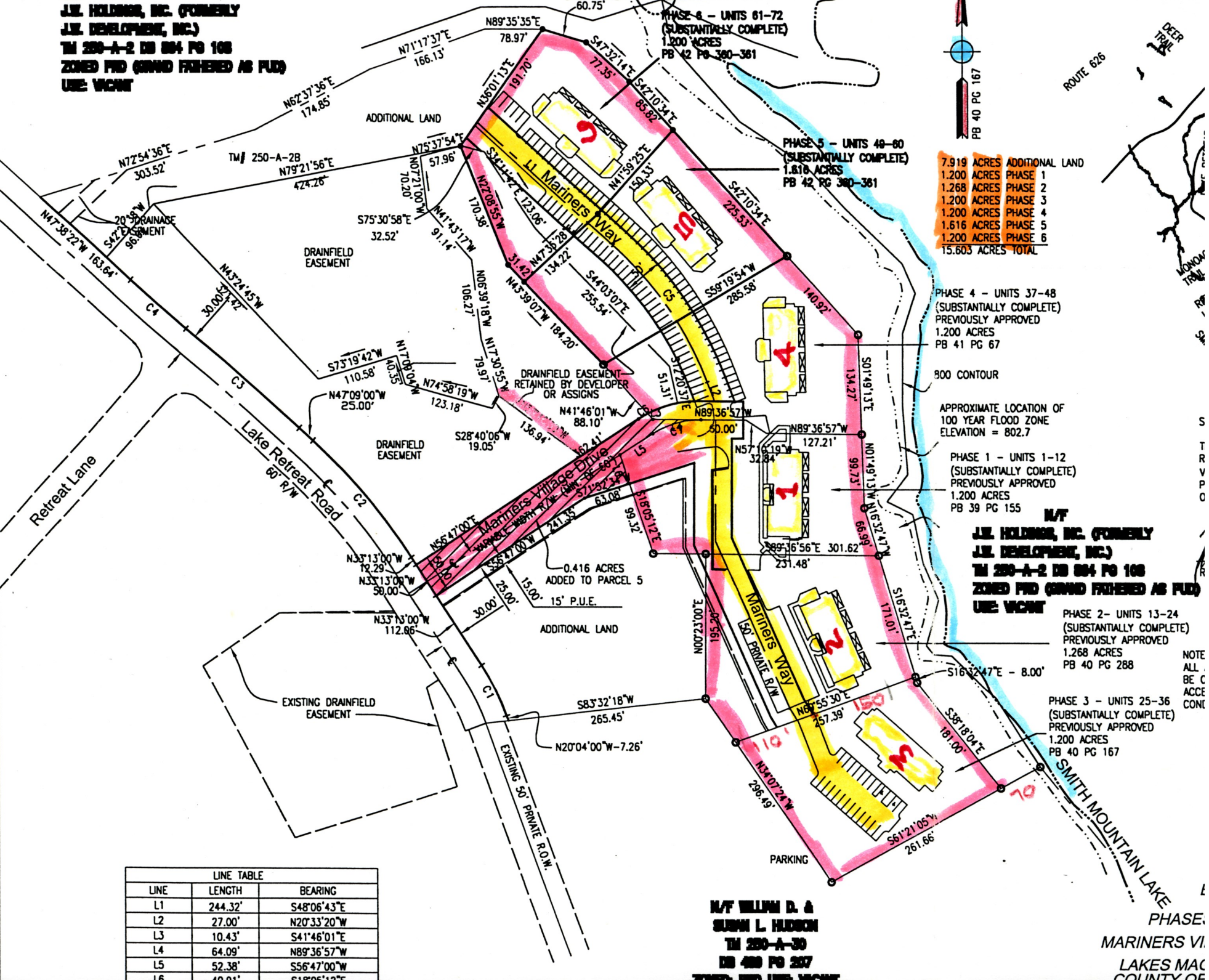


**J.L. HOLDING, INC. (FORMERLY
J.L. DEVELOPMENT, INC.)**
TM 250-A-2 DB 884 PG 108
ZONED FPD (GRAND FATHERED AS FUD)
USE: VCMHT



7.919 ACRES	ADDITIONAL LAND
1.200 ACRES	PHASE 1
1.268 ACRES	PHASE 2
1.200 ACRES	PHASE 3
1.200 ACRES	PHASE 4
1.616 ACRES	PHASE 5
1.200 ACRES	PHASE 6
15.603 ACRES	TOTAL

PHASE 4 - UNITS 37-48
 (SUBSTANTIALLY COMPLETE)
 PREVIOUSLY APPROVED
 1.200 ACRES
 PB 41 PG 67

APPROXIMATE LOCATION OF
 100 YEAR FLOOD ZONE
 ELEVATION = 802.7

PHASE 1 - UNITS 1-12
 (SUBSTANTIALLY COMPLETE)
 PREVIOUSLY APPROVED
 1.200 ACRES
 PB 39 PG 155

N/T
**J.L. HOLDING, INC. (FORMERLY
J.L. DEVELOPMENT, INC.)**
TM 250-A-2 DB 884 PG 108
ZONED FPD (GRAND FATHERED AS FUD)
USE: VCMHT

PHASE 2 - UNITS 13-24
 (SUBSTANTIALLY COMPLETE)
 PREVIOUSLY APPROVED
 1.268 ACRES
 PB 40 PG 288

PHASE 3 - UNITS 25-36
 (SUBSTANTIALLY COMPLETE)
 PREVIOUSLY APPROVED
 1.200 ACRES
 PB 40 PG 167

NOTE
 ALL
 BE C
 ACCE
 CONC

LINE TABLE		
LINE	LENGTH	BEARING
L1	244.32'	S48°06'43"E
L2	27.00'	N20°33'20"W
L3	10.43'	S41°46'01"E
L4	64.09'	N89°36'57"W
L5	52.38'	S56°47'00"W
L6	40.91'	S18°05'12"E

**N/T WILLIAM D. &
SUEBEN L. HUDSON**
TM 250-A-30
DB 480 PG 207
ZONED: FPD USE: VCMHT

PHASE:
 MARINERS VI
 LAKES MAC
 COUNTY OF